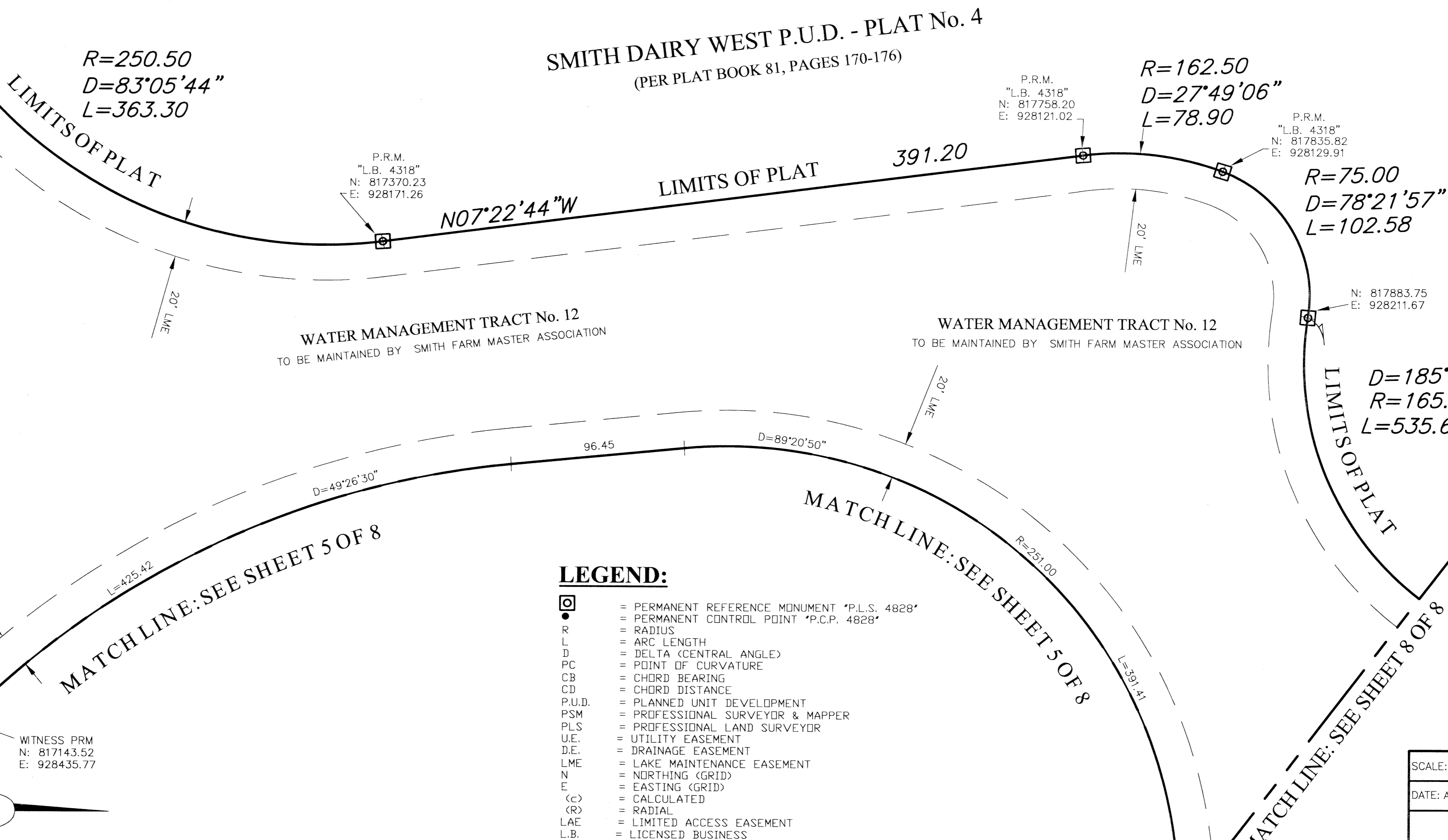
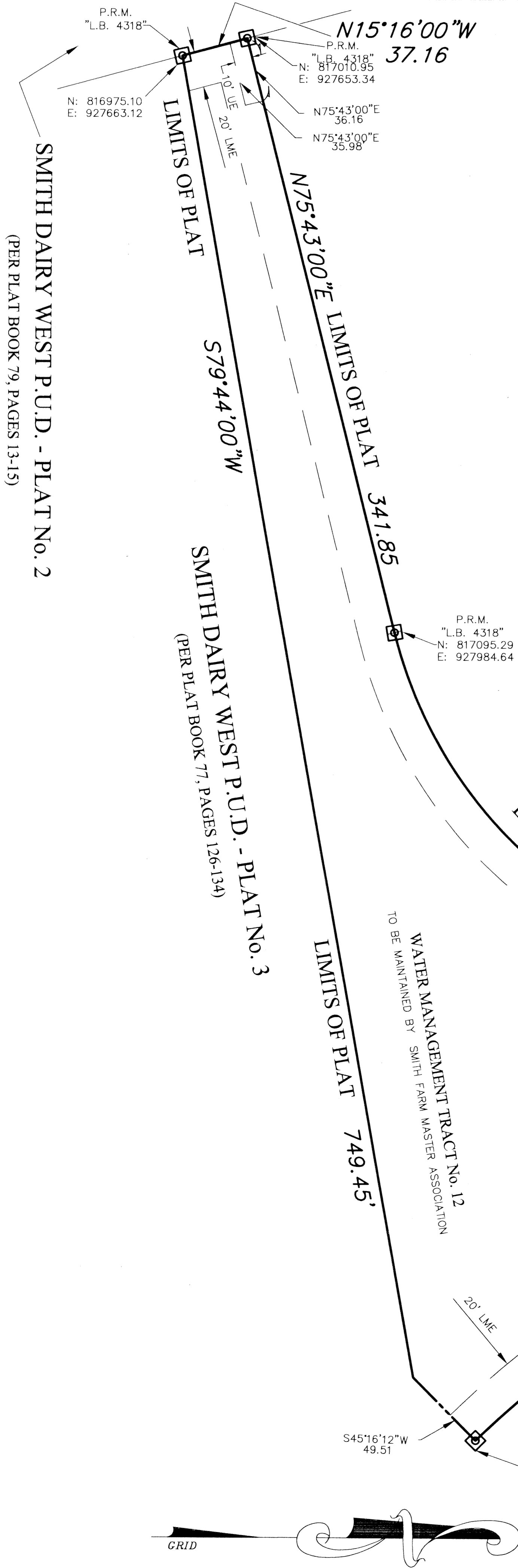
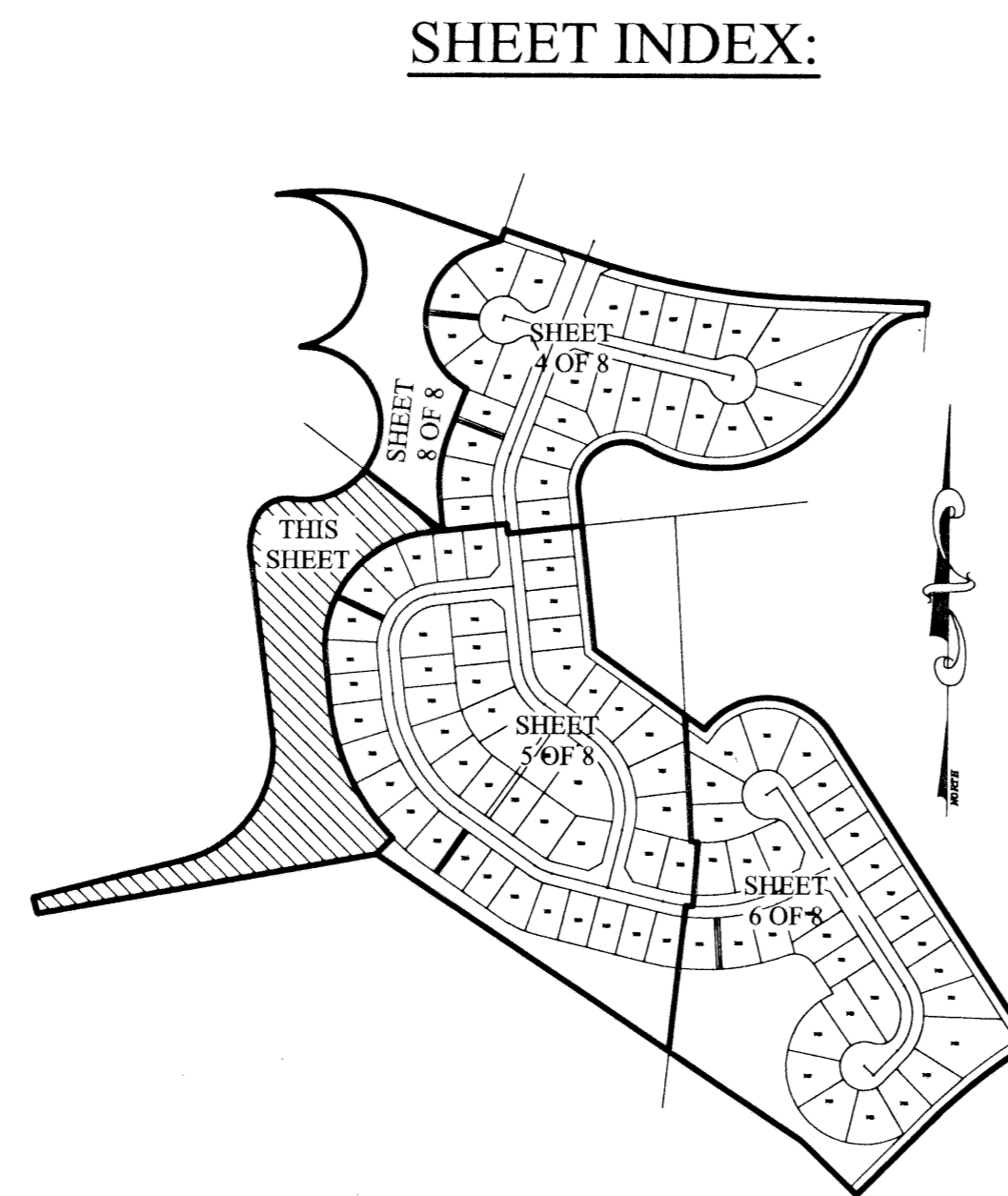


SMITH DAIRY WEST P.U.D. - PLAT No. 7, PHASE II
 BEING A REPLAT OF ALL OF WATER MANAGEMENT TRACT No. 7, AS SHOWN ON
 THE PLAT OF SMITH DAIRY WEST P.U.D. PLAT No. 4, AS RECORDED IN PLAT
 BOOK 81, PAGES 170-176 OF THE PUBLIC RECORDS OF PALM BEACH
 COUNTY, FLORIDA AND A PORTION OF SECTION 4, TOWNSHIP 45 SOUTH,
 RANGE 42 EAST, PALM BEACH COUNTY, FLORIDA, SAID PORTION ALSO
 BEING PART OF BLOCK 38 OF PALM BEACH FARMS COMPANY PLAT No. 3,
 AS RECORDED IN PLAT BOOK 2, PAGES 45 THROUGH 54
 OF SAID PUBLIC RECORDS
 SHEET 7 OF 8
 AUGUST 1998



- LEGEND:**
- ⊙ = PERMANENT REFERENCE MONUMENT "P.L.S. 4828"
 - ⊙ = PERMANENT CONTROL POINT "P.C.P. 4828"
 - R = RADIUS
 - L = ARC LENGTH
 - D = DELTA (CENTRAL ANGLE)
 - PC = POINT OF CURVATURE
 - CB = CHORD BEARING
 - CD = CHORD DISTANCE
 - P.U.D. = PLANNED UNIT DEVELOPMENT
 - PSM = PROFESSIONAL SURVEYOR & MAPPER
 - PLS = PROFESSIONAL LAND SURVEYOR
 - U.E. = UTILITY EASEMENT
 - D.E. = DRAINAGE EASEMENT
 - L.M.E. = LAKE MAINTENANCE EASEMENT
 - N = NORTHING (GRID)
 - E = EASTING (GRID)
 - (C) = CALCULATED
 - (R) = RADIAL
 - L.A.E. = LIMITED ACCESS EASEMENT
 - L.B. = LICENSED BUSINESS
 - P.R.M. = PERMANENT REFERENCE MONUMENT

SUBDIVISION: Smith Dairy West
 PLAT: 7
 PHASE: II
 BOOK: 81
 PAGE: 81
 FLOOD MAP # 170A
 ZONING: PUD
 QUAD # 49
 SE 94-LL
 TAZ 44
 FUD NAME: Smith Dairy West

SCALE: 1"=40'
 DATE: AUGUST 1998

N.M. NICK MILLER, INC.
 Surveying & Mapping Consultants

SMITH DAIRY WEST P.U.D. - PLAT No. 7, PHASE II

2560 RCA Blvd., Suite 105
 Palm Beach Gardens, Florida 33410
 (561) 627-5200
 D.B.P.R. Business License No. 4318

DRAWING NUMBER
94014CR

